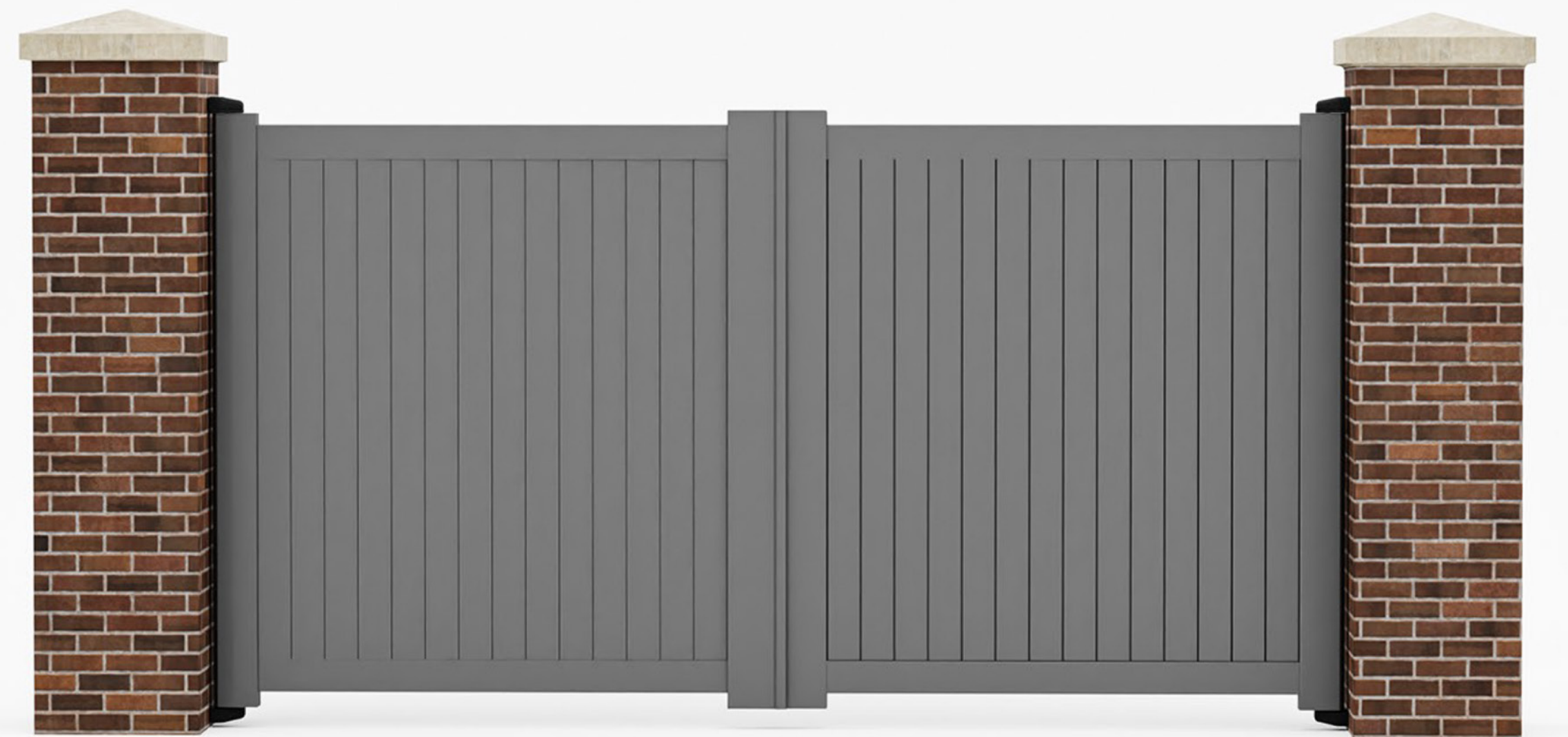


INSTALLATION FITTING INSTRUCTIONS

# ALUMINIUM DOUBLE DRIVEWAY GATE

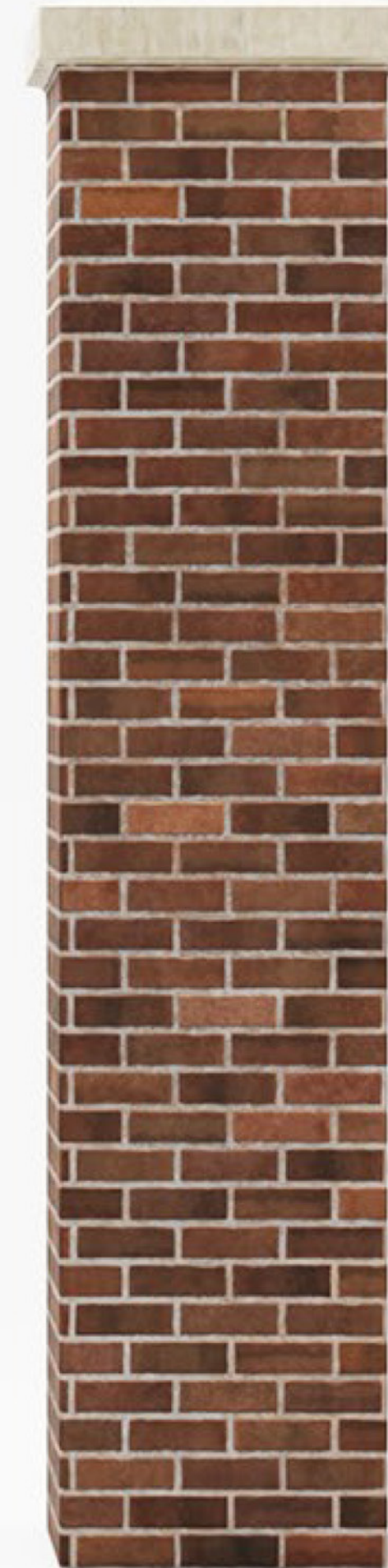
(BRICK TO BRICK USING  
WALL MOUNTED HINGES)



# CONTENTS



- 1. CHECK WIDTH OF OPENING**
- 2. MARK LOWER BRACKET**
- 3. PRE-ASSEMBLE LOWER SPIGGOT**
- 4. FIX LOWER HINGE TO WALL**
- 5. LOAD GATE – HOLD SQUARE**
- 6. ASSEMBLE UPPER SPIGGOT**
- 7. MARK UPPER BRACKET**
- 8. DRILL HOLES X 2**
- 9. FIX UPPER HINGE**
- 10. REPEAT STEPS 2-9 FOR L.H. GATE**
- 11. ADJUST UPPER HINGES**
- 12. FIT COVERS – 4 X PLACES**



# 1: CHECK GATE WIDTH



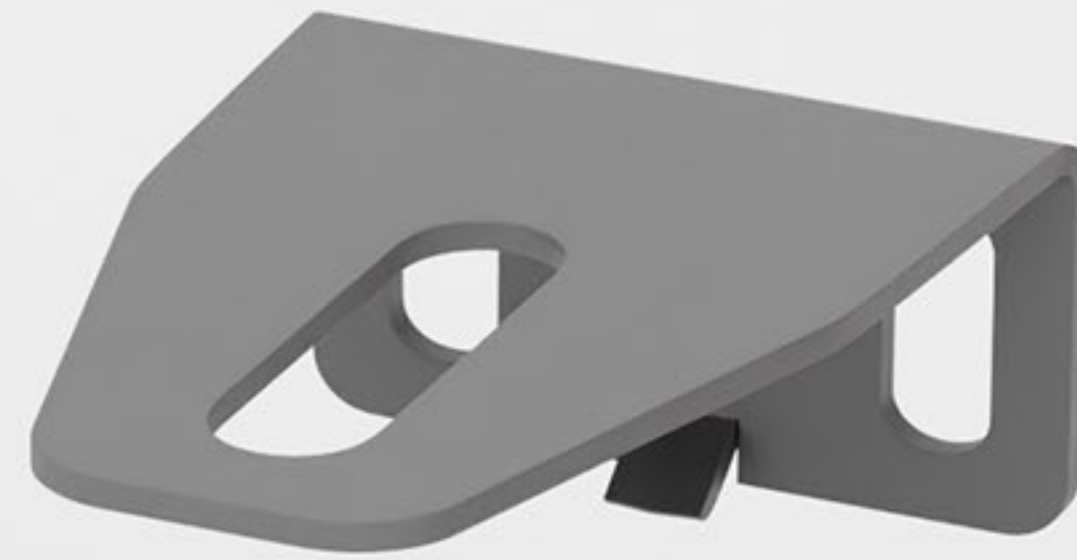
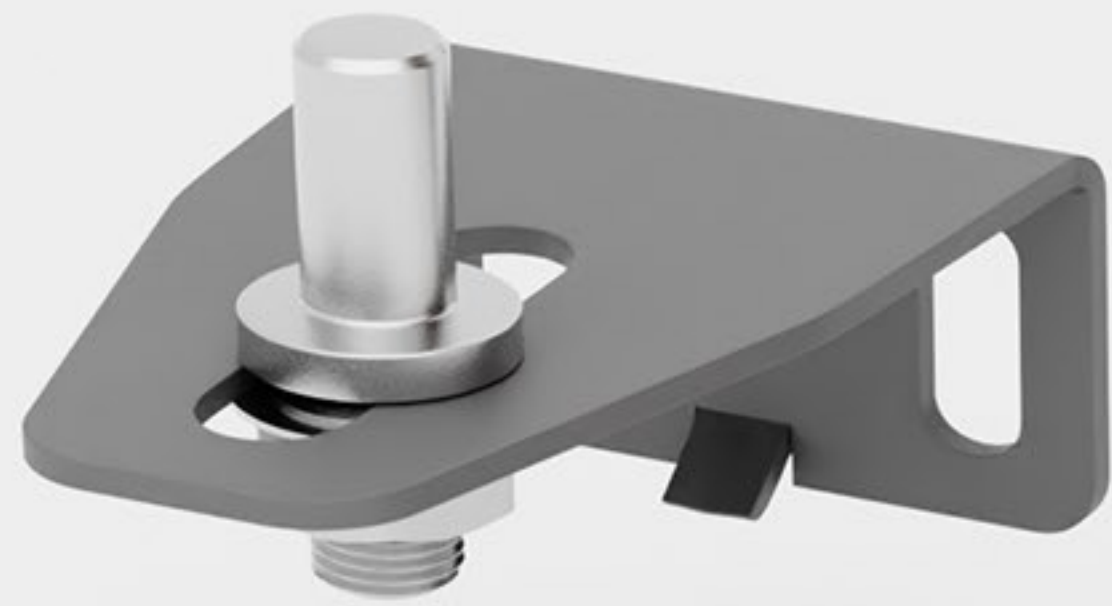


## 2: MARK & DRILL LOWER BRACKET

## NOTES

- 2 X PLACES
- 10MM DRILL





### **3: PRE-ASSEMBLE LOWER SPIGGOT**



**M10 BOLTS  
2 x PLACES**

**4: FIX LOWER HINGE TO WALL**

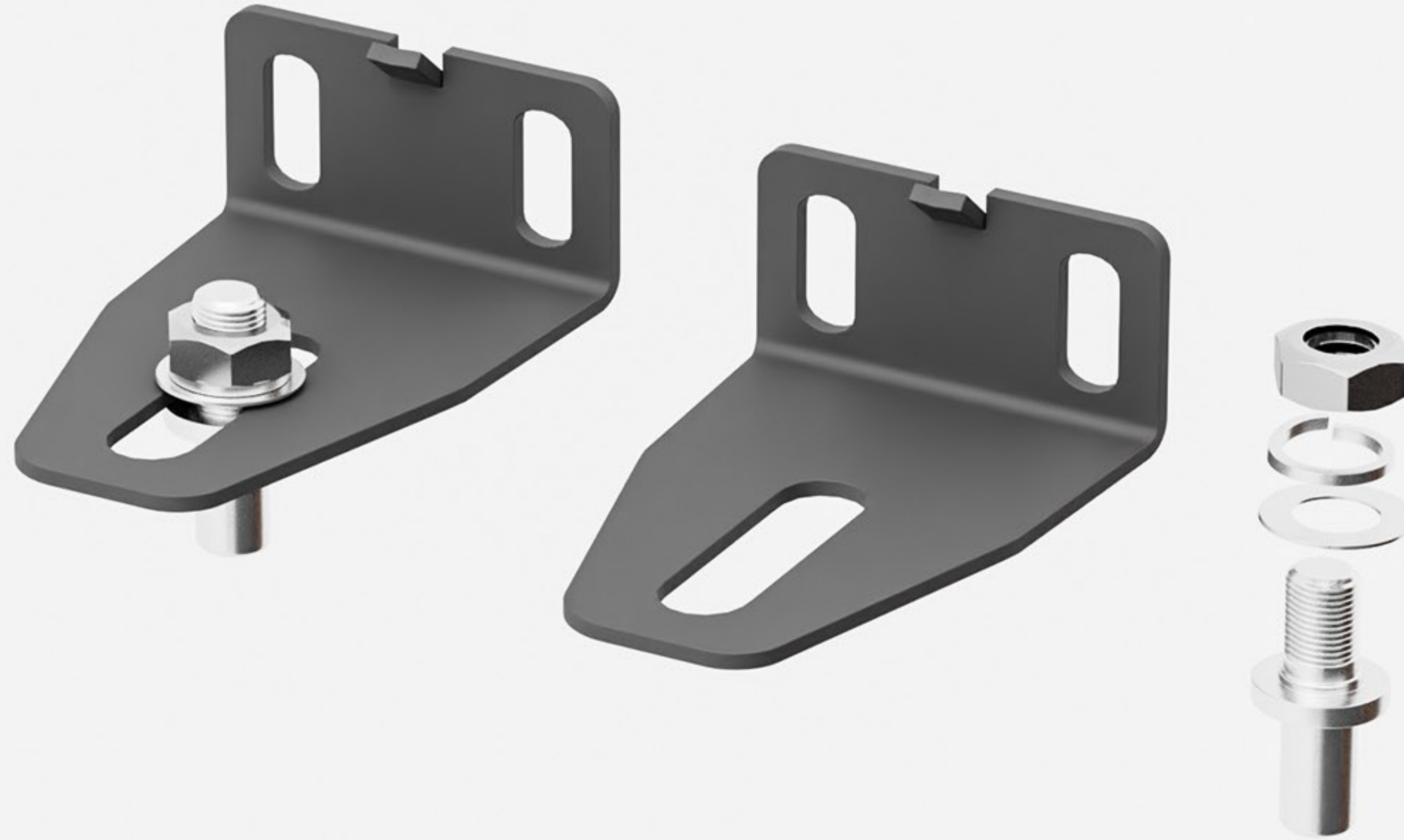


## 5: LOAD GATE - HOLD SQUARE



**TWO PERSON LIFT ADVISED**

## 6: ASSEMBLE UPPER SPIGGOT



### NOTES

- OPPOSITE TO LOWER BRACKET



## 7: MARK UPPER BRACKET



## NOTES

- HOLD GATE SQUARE
- MARK 2 X PLACES



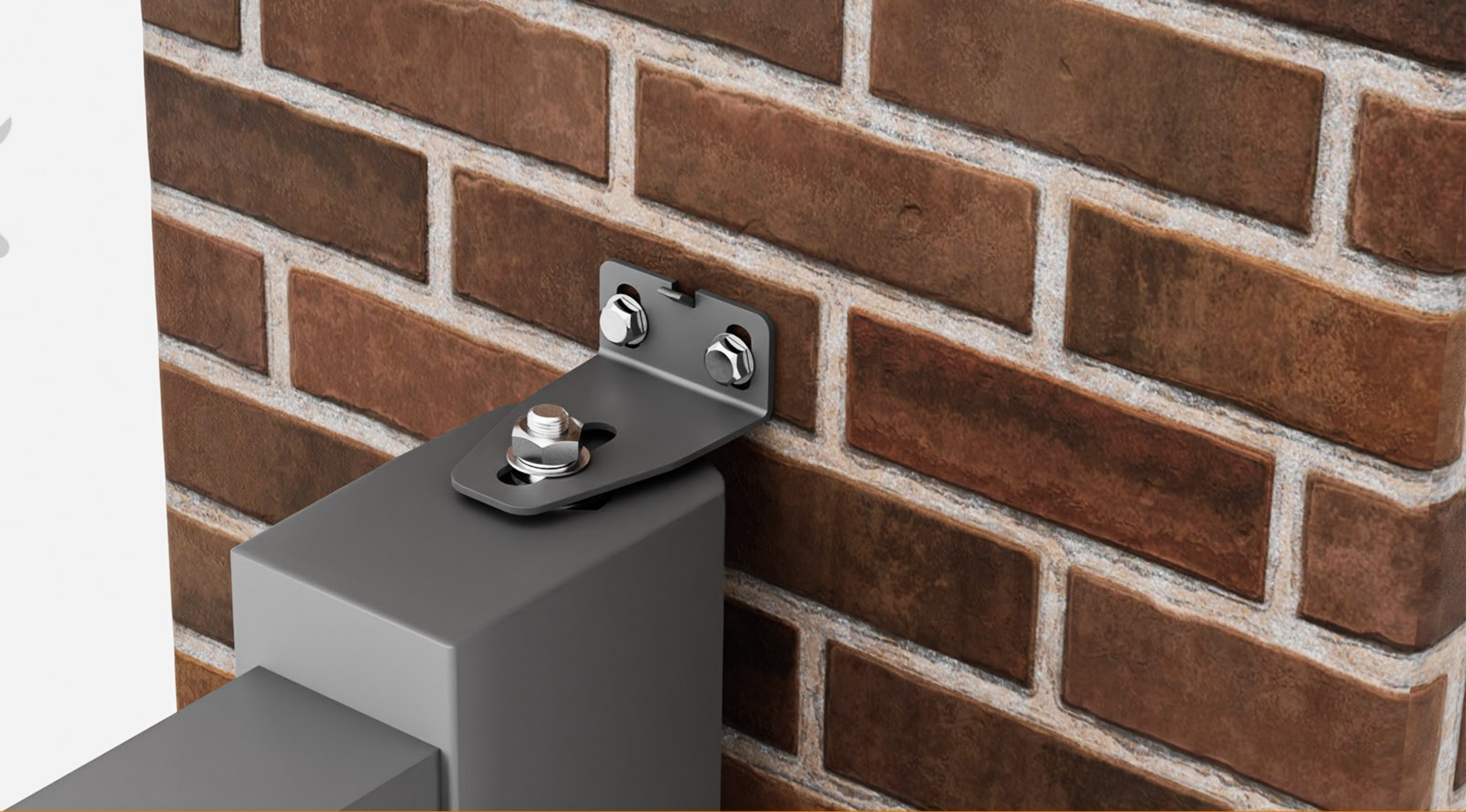


**8: DRILL HOLES x 2**



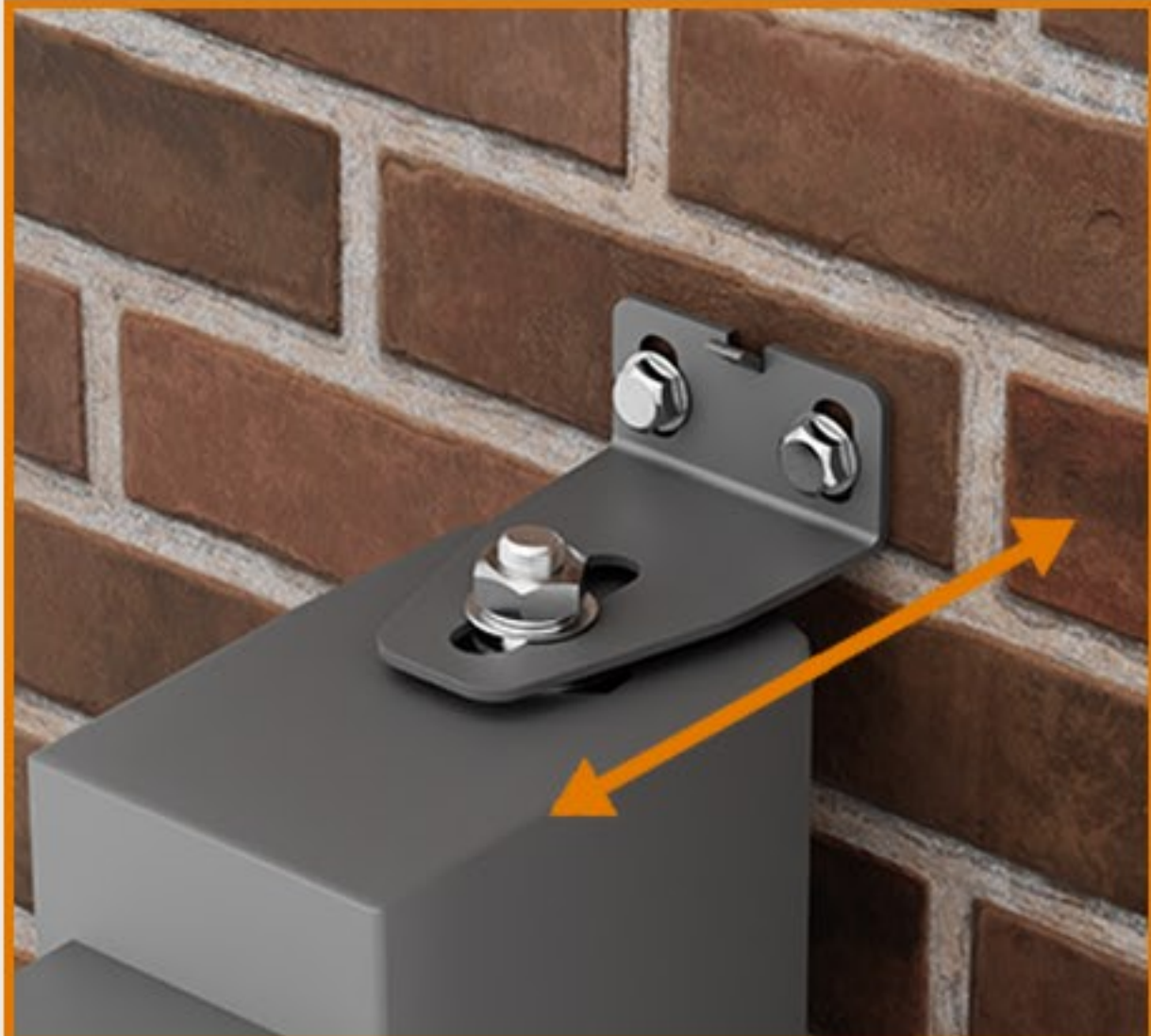
**NOTES**

- **10MM DRILL**
- **50MM MIN DEPTH**



**9: FIX UPPER HINGE**

**REPEAT  
STEP 2 TO 9  
FOR LH GATE**



**2 X PLACES**

**10MM GAP**

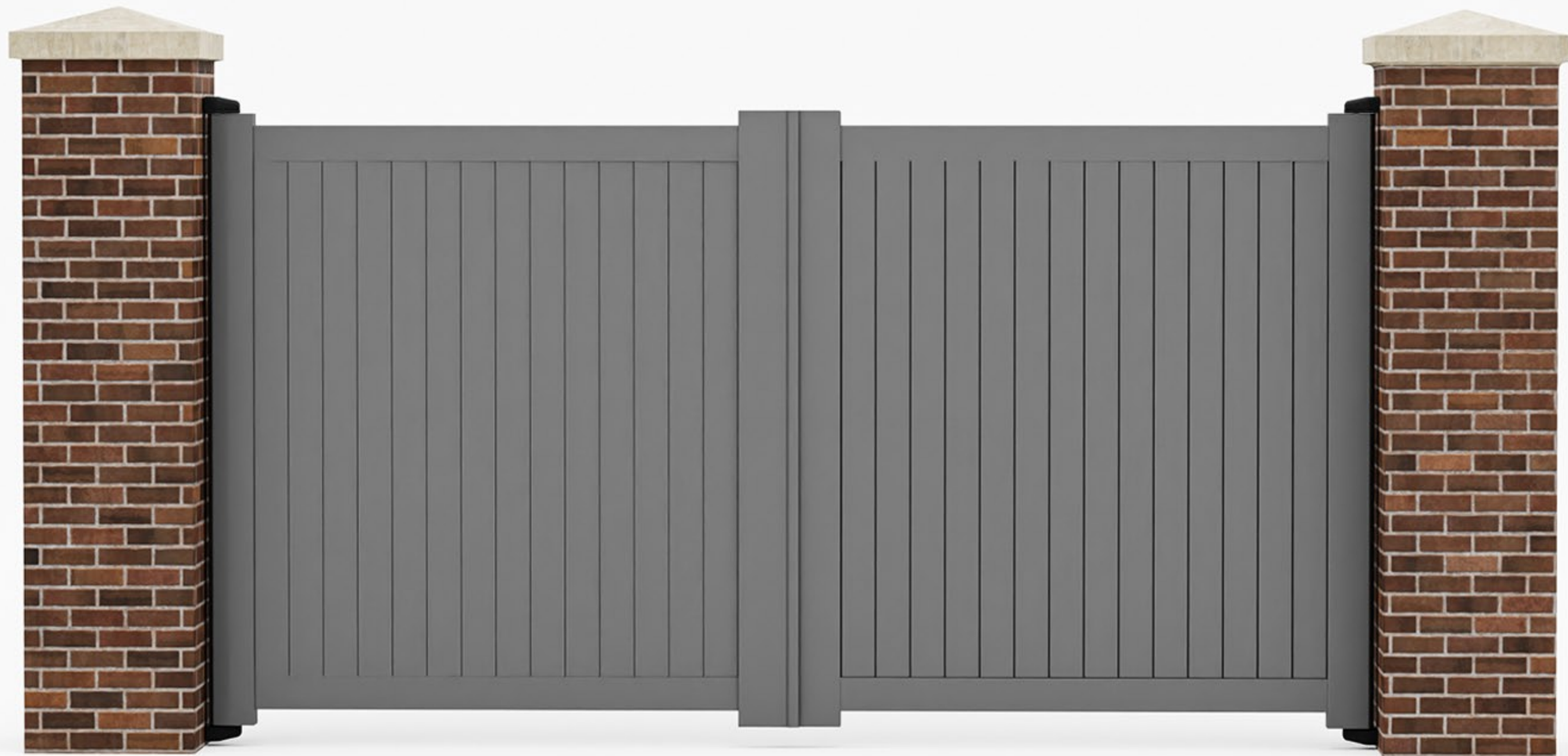
**11: ADJUST UPPER HINGES**





**12: FIT COVERS - 4 X PLACES**

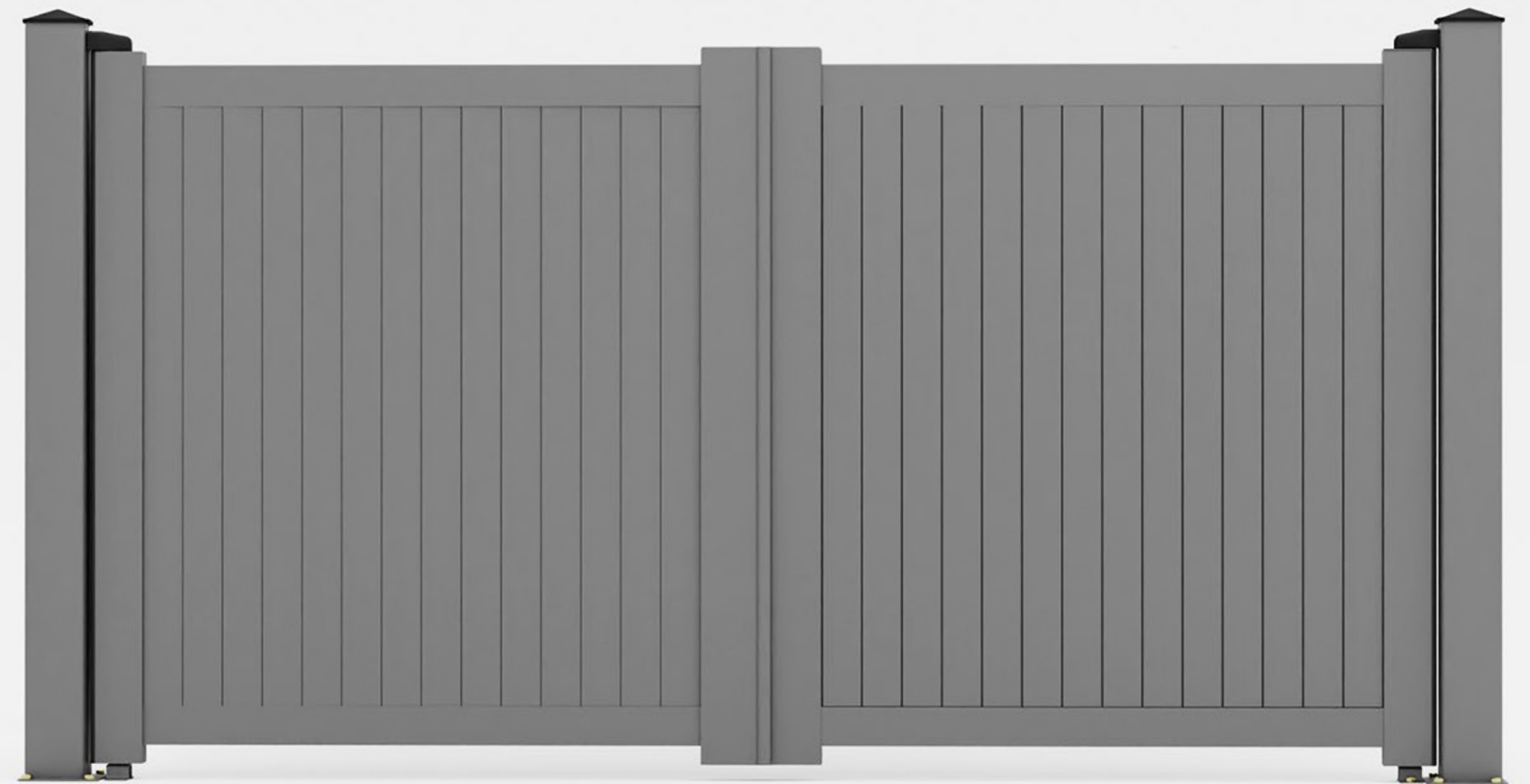
**PROJECT COMPLETE**



INSTALLATION FITTING INSTRUCTIONS

# ALUMINIUM DOUBLE DRIVEWAY GATE

(BETWEEN POSTS)





# CONTENTS

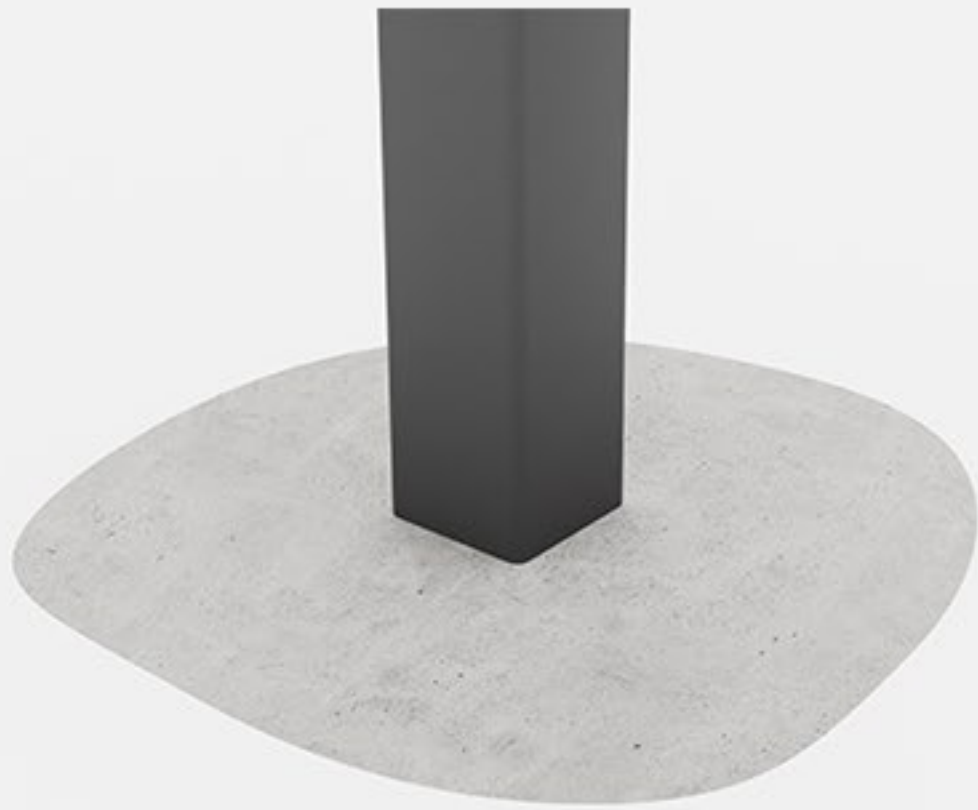
- 1. MARK POSITION OF POSTS**
- 2. FLOOR OR CONCRETE MOUNT**
- 3. DRILL FLOOR BOLTS**
- 4. FIX TO FLOOR**
- 5. DIG POST HOLES**
- 6. CUT 2 X POSTS TO LENGTH**
- 7. CONCRETE POSTS**
- 8. FLOOR SPIGGOT**
- 9. PRE-ASSEMBLE LOWER SPIGGOT**
- 10. FIX LOWER HINGE TO FLOOR**
- 11. ASSEMBLE UPPER SPIGGOT**
- 12. LOAD GATE - HOLD SQUARE**
- 13. MARK UPPER HINGE POSITION &  
DRILL POST**
- 14. FIX UPPER HINGE**
- 15. REPEAT STEPS 8-15 FOR L.H. GATE**
- 17. ADJUST UPPER HINGES**
- 18. FIT COVERS – 4 X PLACES**

# 1: MARK POSITION OF POSTS

**GATE WIDTH  
+ 30MM - 60MM**

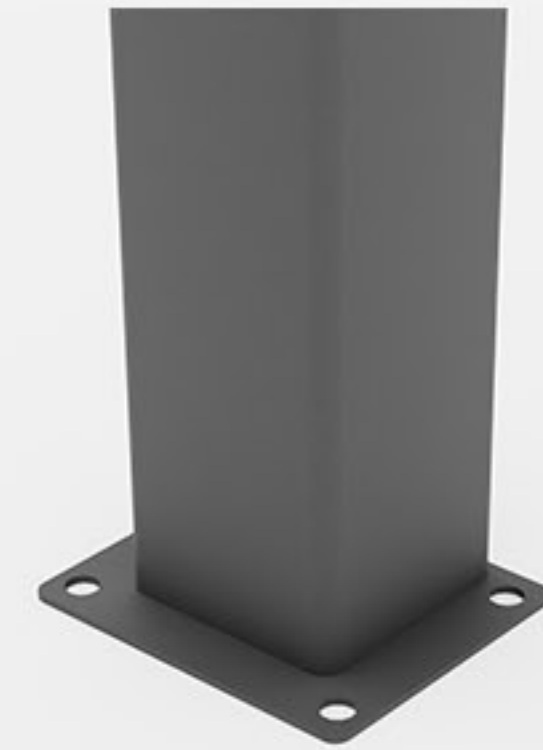


## 2: FLOOR OR CONCRETE MOUNT



**CONCRETE -  
GO TO STEP 5**

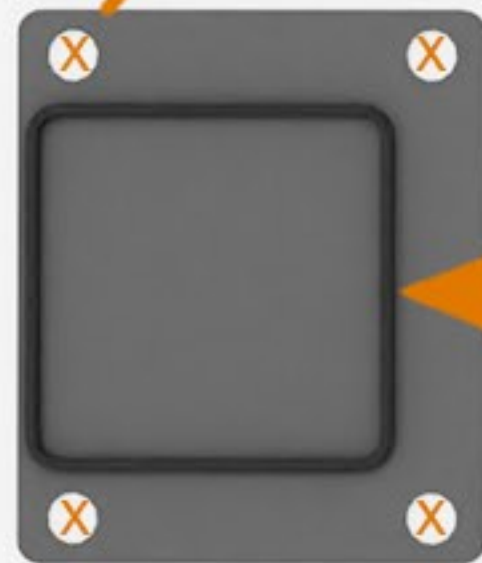
**OR**



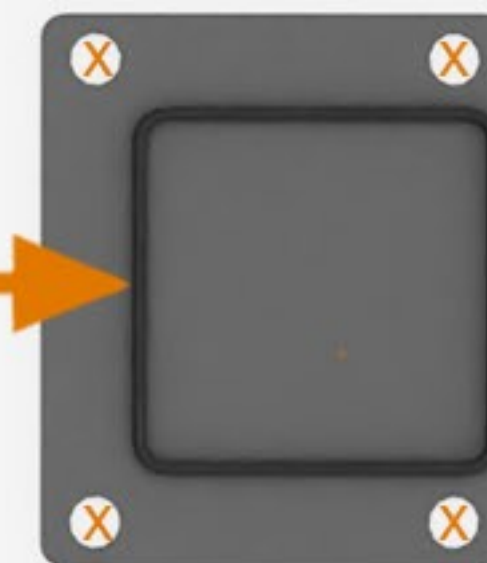
**FLOOR MOUNT -  
GO TO STEP 3**

# 3: DRILL FLOOR BOLTS

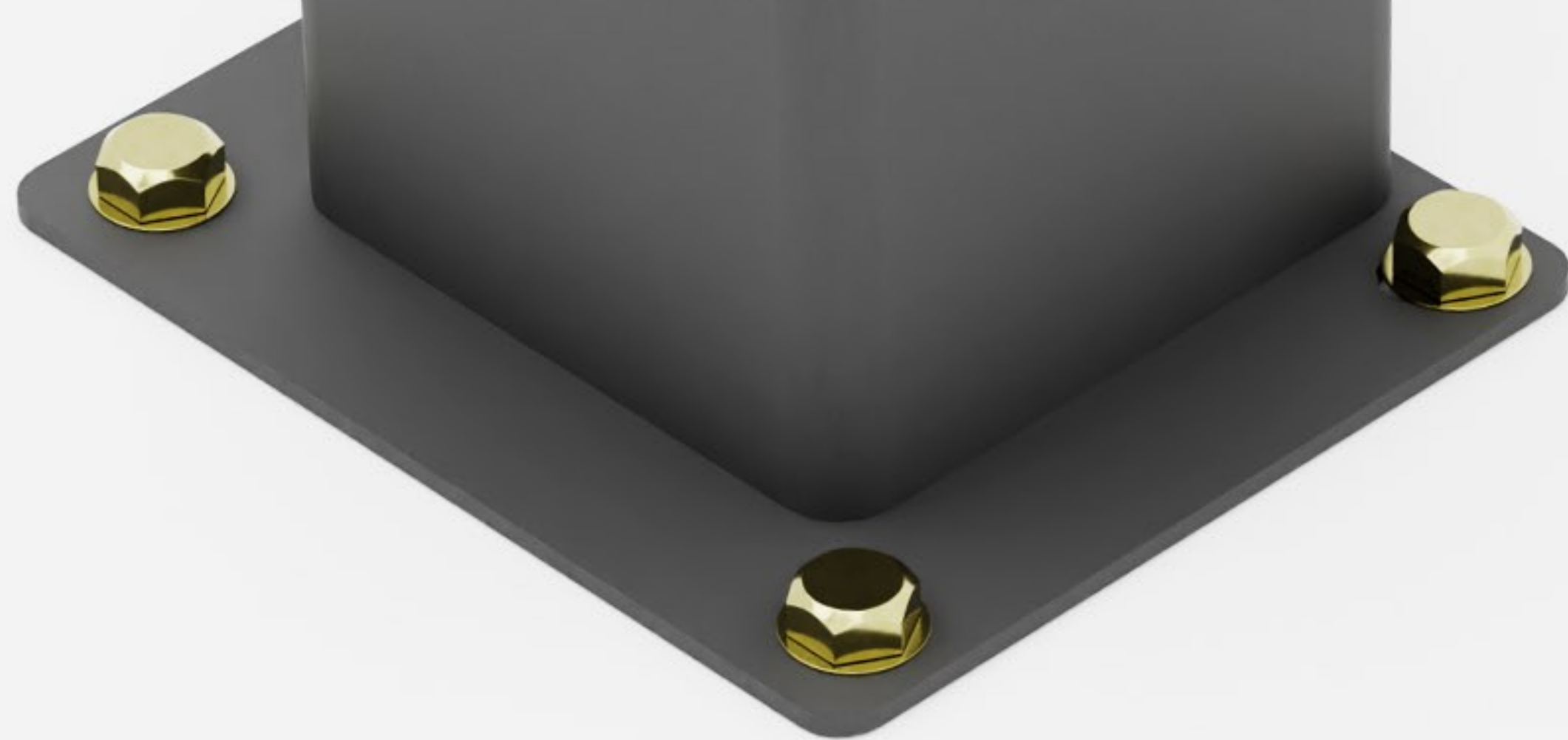
10MM DRILL - 8 PLACES



GATE WIDTH  
+ 30MM



## 4: FIX TO FLOOR



**GO TO STEP 8**

## NOTES

- M10 X 75MM BOLTS
- 8 X PLACES
- WRENCH OR SOCKET SET



**\*FOR CONCRETE MOUNT ONLY**

## **5: DIG POST HOLES**

**DIG 2 x POST HOLES  
MINIMUM 500MM  
BELOW GROUND LEVEL**



## 6: CUT 2 X POSTS TO LENGTH

**GATE HEIGHT  
+ 100MM FROM  
GROUND LEVEL**



# 7: CONCRETE POSTS

← SET WIDTH BETWEEN POSTS  
GATE WIDTH + 30MM →

USE QUICKSET CONCRETE

ENSURE POSTS ARE  
SQUARE IN BOTH AXIS





## NOTES

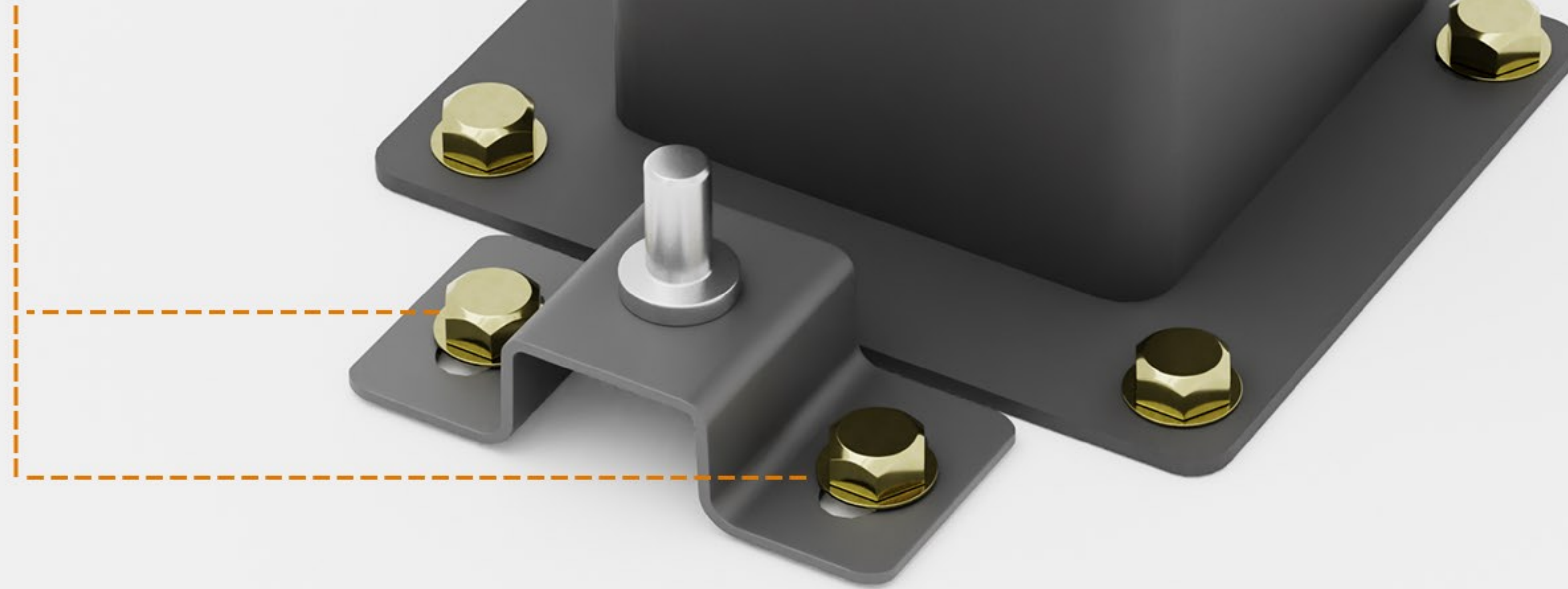
- BRACKET TO POST  
40MM MIN  
60MM MAX
- DRILL 2 x PLACES
- 10MM DRILL





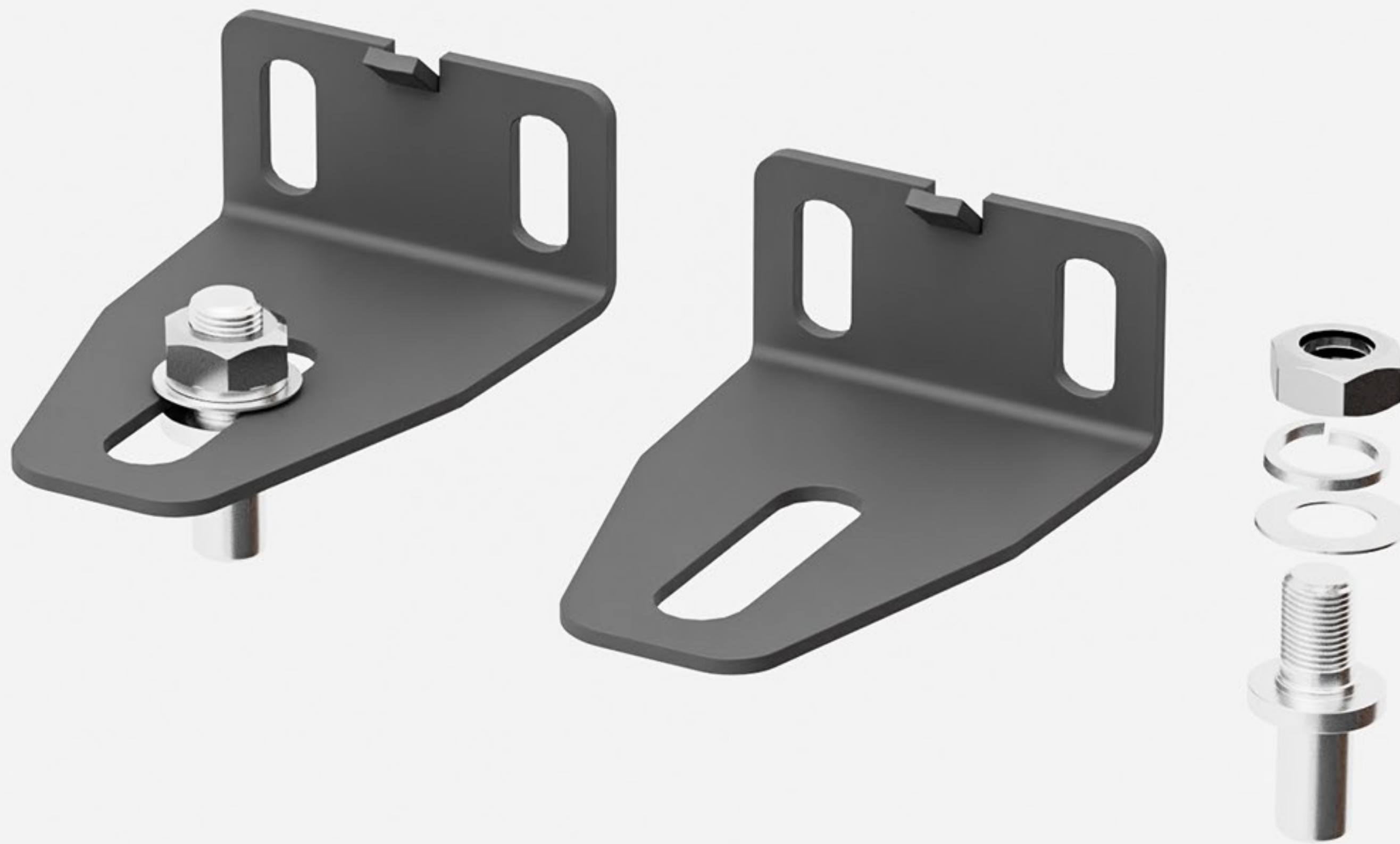
## 9: PRE-ASSEMBLE LOWER SPIGGOT

**M10 BOLTS  
2 x PLACES**



**10: FIX LOWER HINGE TO FLOOR**

# 11: ASSEMBLE UPPER SPIGGOT



## NOTES

- OPPOSITE TO LOWER BRACKET

## 12: LOAD GATE - HOLD SQUARE



## NOTES

- HOLD GATE SQUARE
- LOAD UPPER HINGE
- MARK 2 X PLACES



**13: MARK UPPER HINGE POSITION**

## NOTES

- DRILL 2 x PLACES
- 12MM DRILL



**13: DRILL POST**

## NOTES

- 2 x M12 x 35MM
- 2 x M12 NUTS
- 4 x WASHERS



**14: FIX UPPER HINGE**



**REPEAT**  
**STEP 8 TO 15**  
**FOR LH GATE**



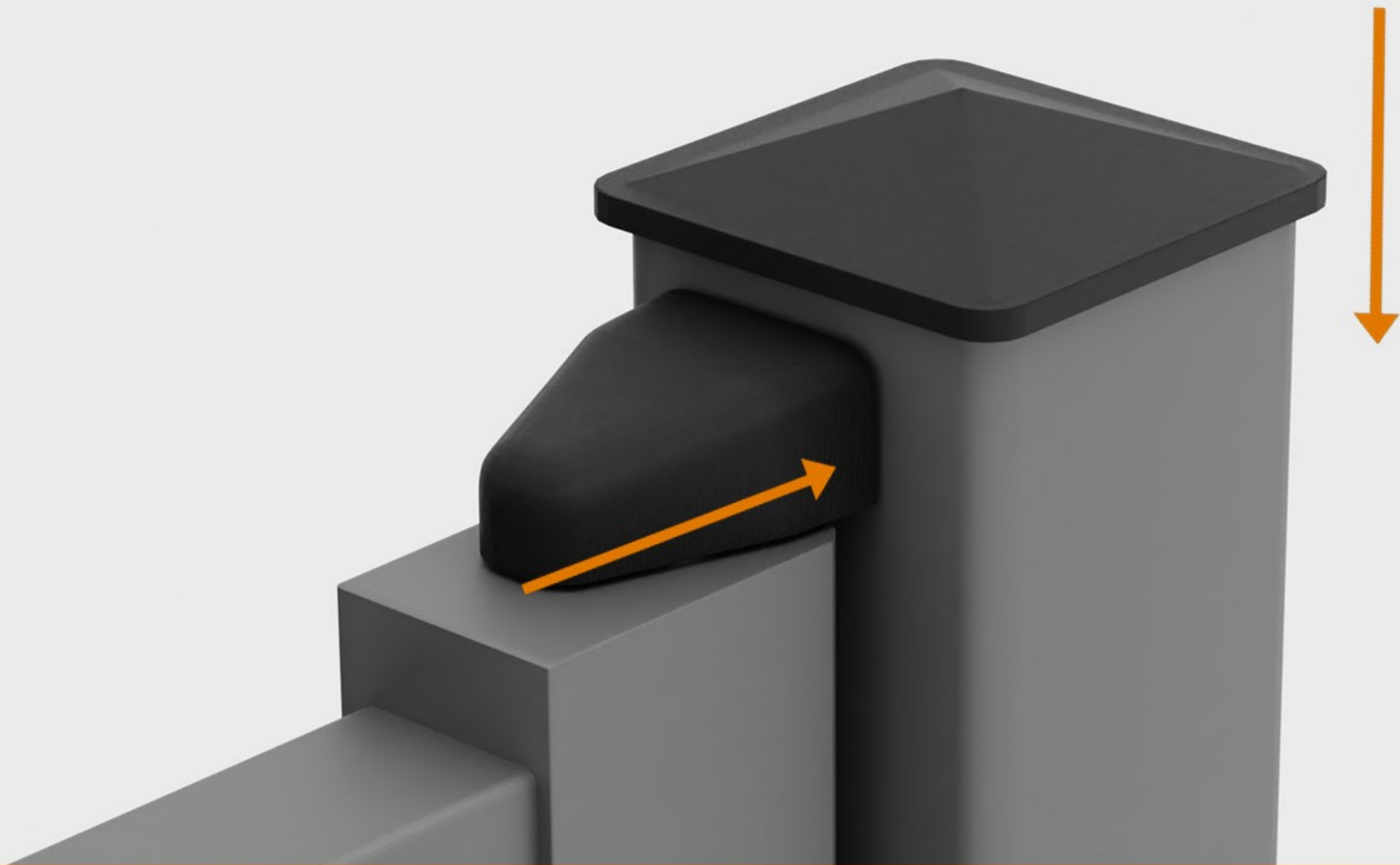
**2 X PLACES**

**10MM GAP**

A diagram showing a grey metal hinge assembly. A dashed orange line indicates a gap between two parts of the hinge. Two orange arrows point to this gap, with the text '10MM GAP' written above them.

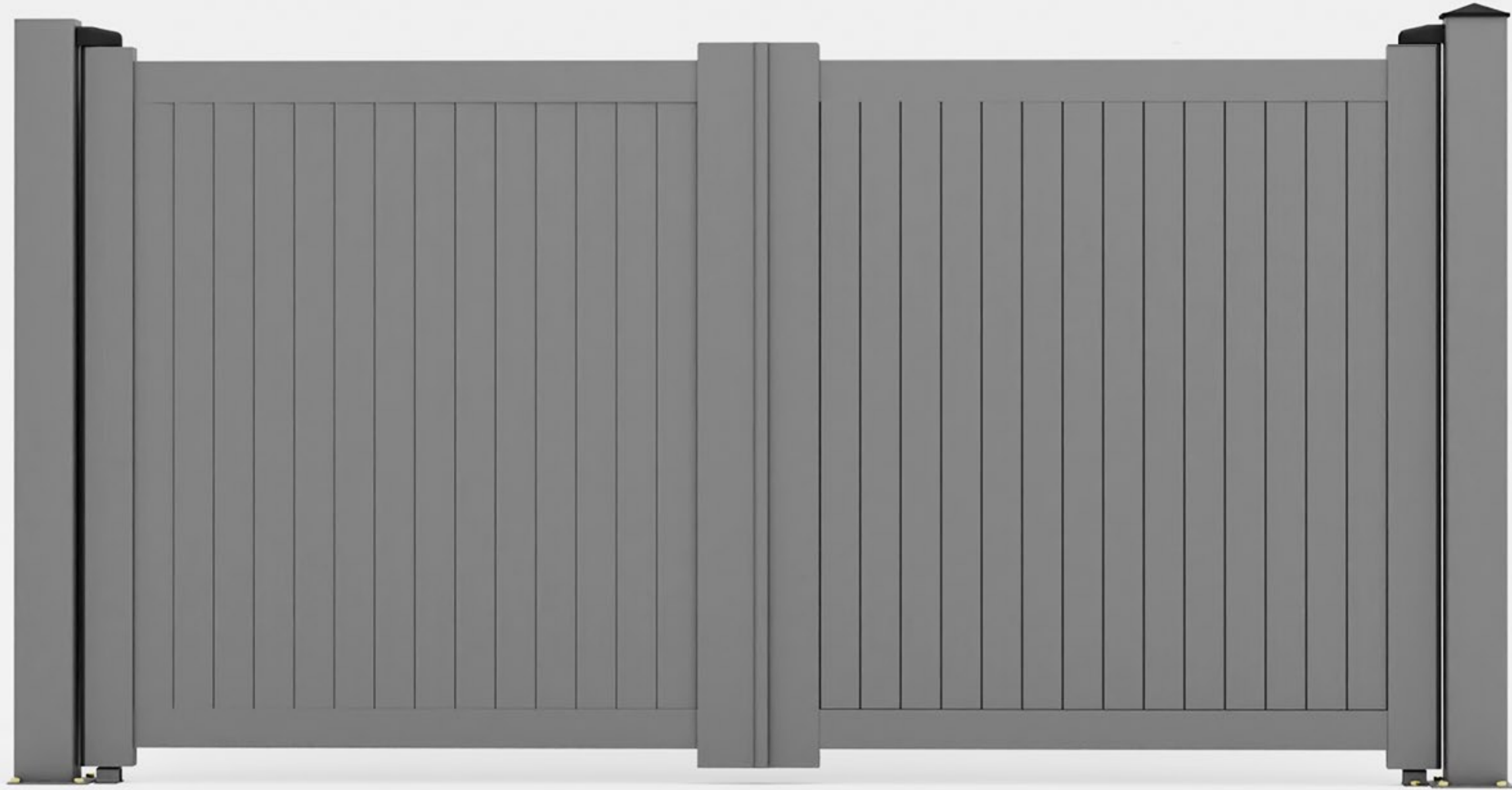
**17: ADJUST UPPER HINGES**





**18 : FIT COVERS - 4 X PLACES**

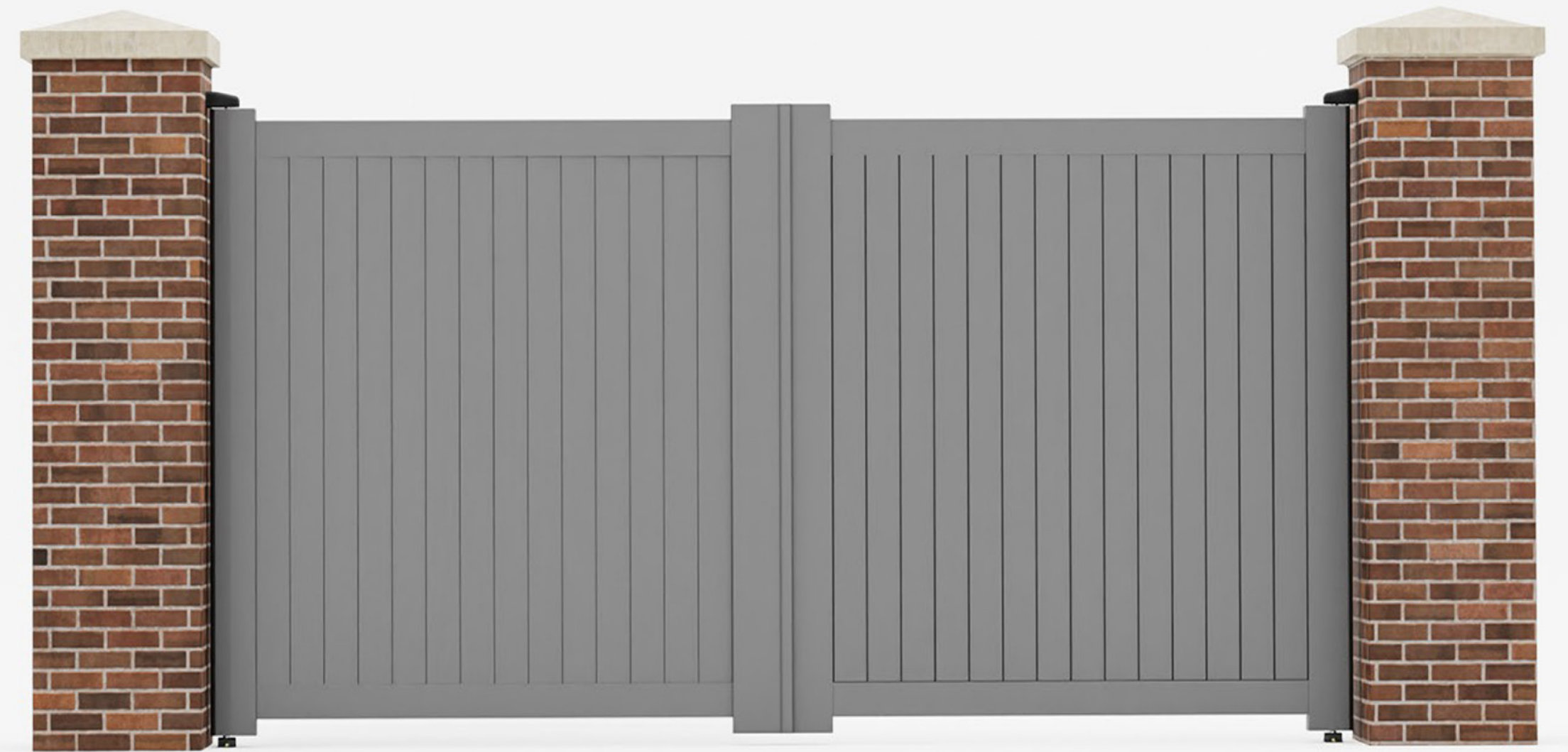
**PROJECT COMPLETE**



INSTALLATION FITTING INSTRUCTIONS

# ALUMINIUM DOUBLE DRIVEWAY GATE

(BRICK TO BRICK USING  
FLOOR MOUNTED HINGES)



# CONTENTS



- 1. CHECK WIDTH OF OPENING**
- 2. MARK LOWER BRACKET**
- 3. PRE-ASSEMBLE LOWER SPIGGOT**
- 4. FIX LOWER HINGE TO FLOOR**
- 5. LOAD GATE – HOLD SQUARE**
- 6. ASSEMBLE UPPER SPIGGOT**
- 7. MARK UPPER BRACKET**
- 8. DRILL HOLES X 2**
- 9. FIX UPPER HINGE**
- 10. REPEAT STEPS 2-9 FOR L.H. GATE**
- 11. ADJUST UPPER HINGES**
- 12. FIT COVERS – 2 X PLACES**



# 1: CHECK GATE WIDTH





## NOTES

- 2 X PLACES
- 10MM DRILL



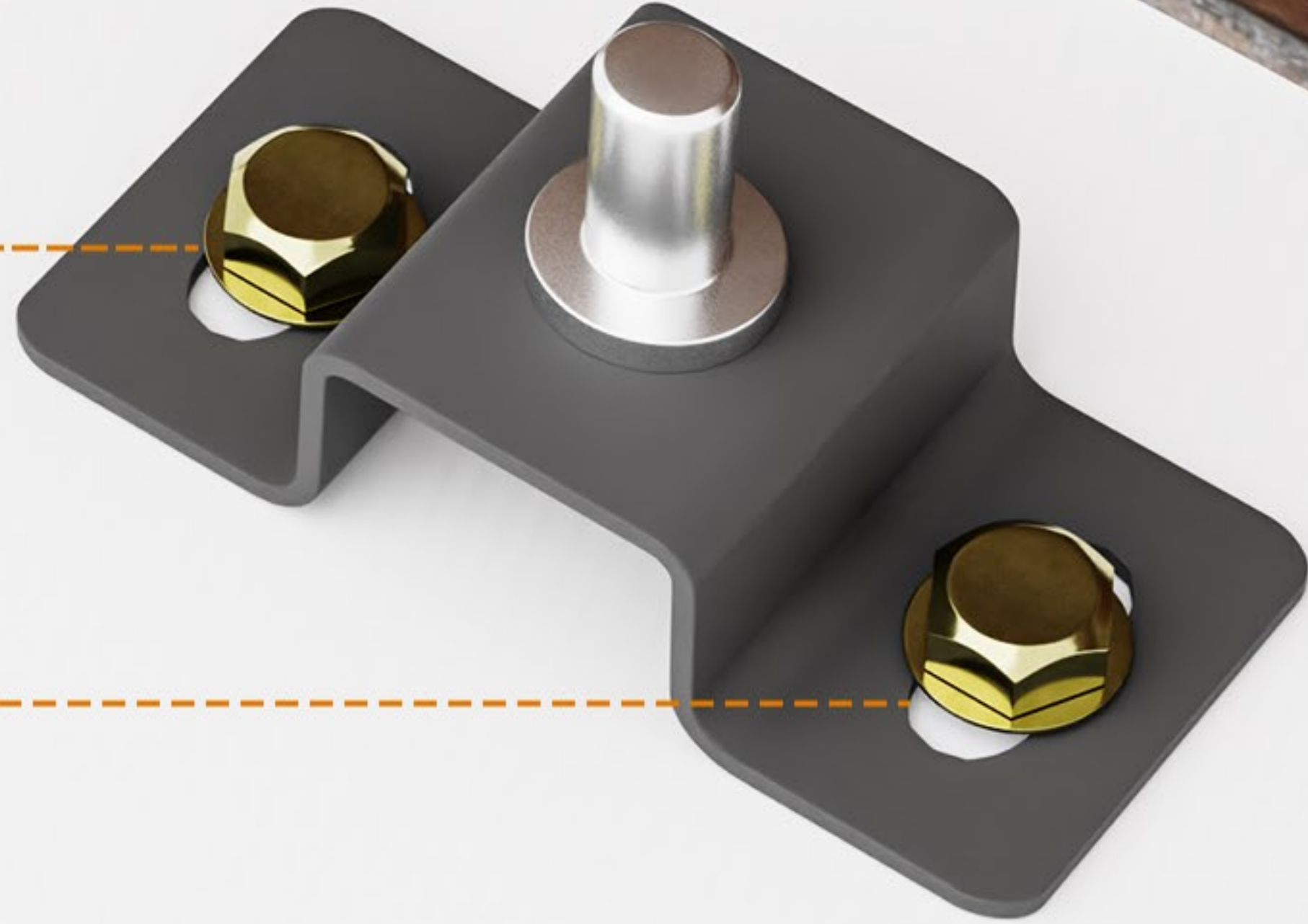
## 2: MARK LOWER BRACKET





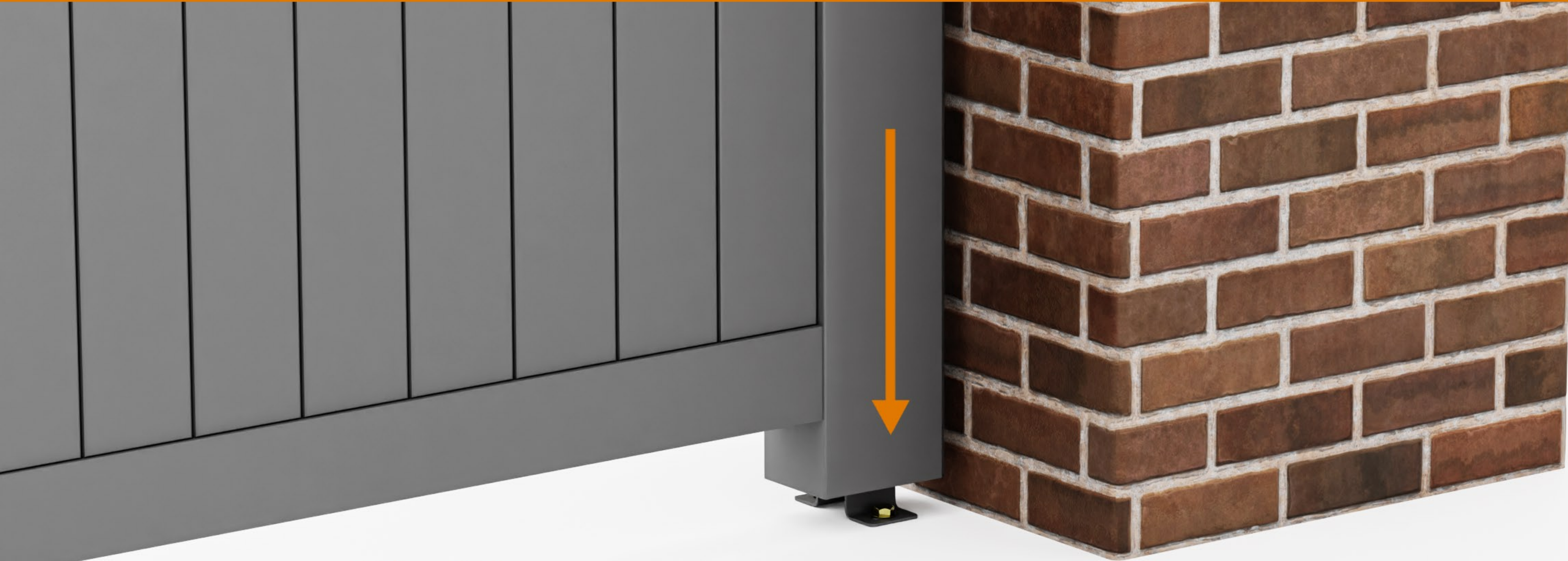
### **3: PRE-ASSEMBLE LOWER SPIGGOT**

**M10 BOLTS  
2 x PLACES**



**4: FIX LOWER HINGE TO FLOOR**

## 5: LOAD GATE - HOLD SQUARE



**TWO PERSON LIFT ADVISED**

## 6: ASSEMBLE UPPER SPIGGOT



### NOTES

- OPPOSITE TO LOWER BRACKET

## 7: MARK UPPER BRACKET



## NOTES

- HOLD GATE SQUARE
- MARK 2 X PLACES



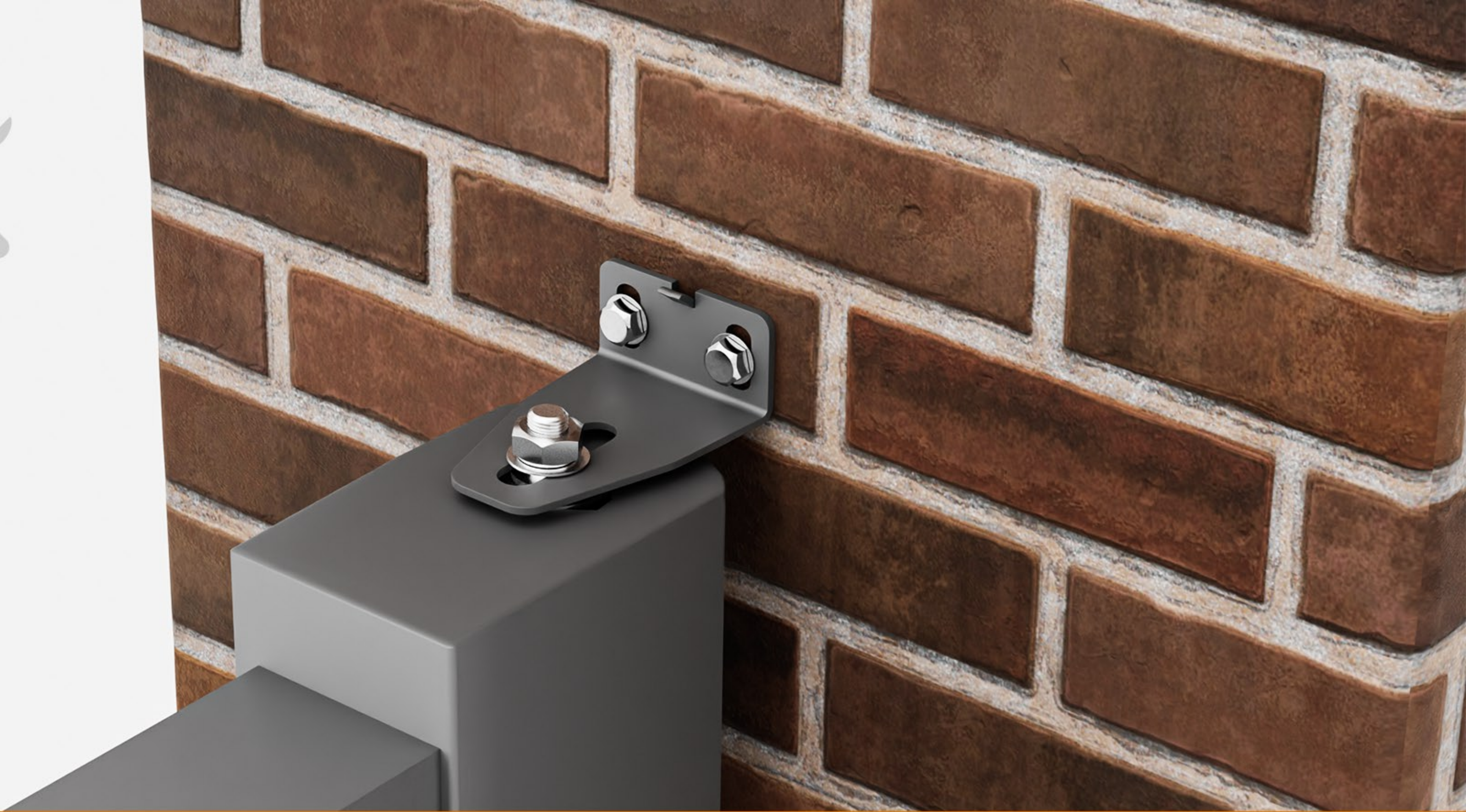


**8: DRILL HOLES x 2**



**NOTES**

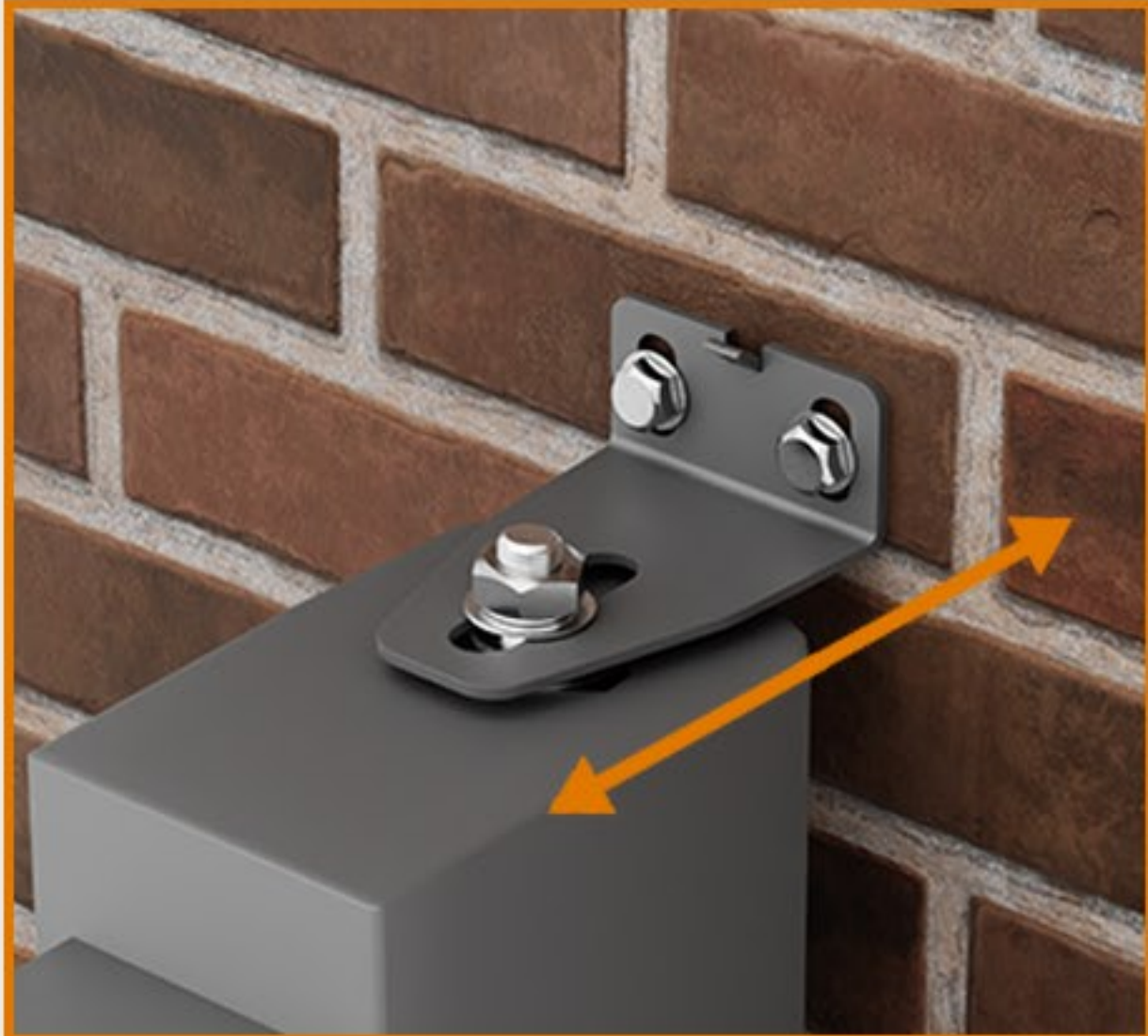
- **10MM DRILL**
- **50MM MIN DEPTH**



**9: FIX UPPER HINGE**

**REPEAT  
STEP 2 TO 9  
FOR LH GATE**





**2 X PLACES**

**10MM GAP**

**11: ADJUST UPPER HINGES**





**12: FIT COVERS - 2 X PLACES**

**PROJECT COMPLETE**

